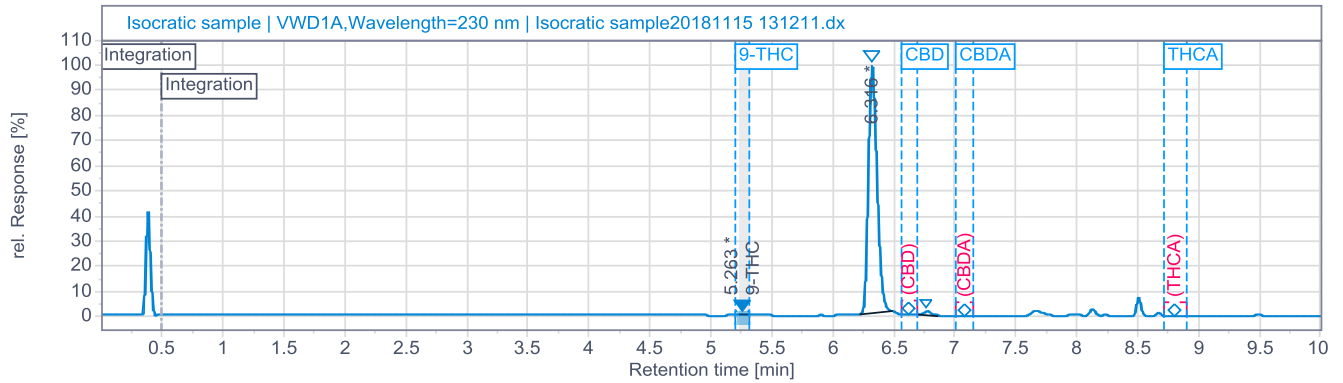


10mg/ml
 Sample: SN#WSRCL-0001
 Regular Water Soluble-REGULAR-CHERRY LIMEADE
 Batch #:WSRCL-11142018
 Sample Received: 11/14/2018; Report Created: 11/15/2018

Cannabinoid Results



Product Image



Cannabinoid Profile

% 9-THC	% CBD	% CBDA	% THCA
RT: 5.26 0.0107	RT: 6.31 1.0301 10.30 mg/ml	RT: 6.76 0.0693	RT: 8.81 ND

Spec : %RSD: ≤ 2.0 Spec: USP Tailing: ≤ 2.0
 Spec: Check STD Diff.: ≤ ±2.0% Spec: Tangent Resolution: ≥ 2.0

